

Janus

CONTROL VALVE

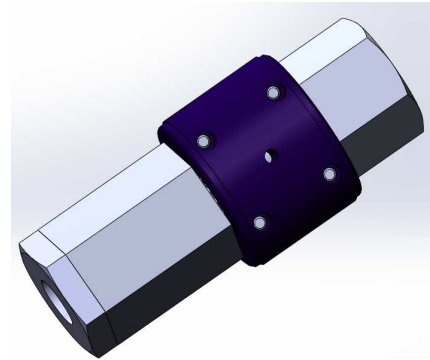
FLOW CONTROL
VALVE

The
**Water
Hydraulics**
Co. Ltd.

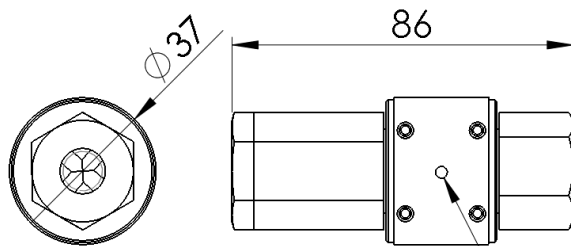
SHEET 1 OF 1

Manufactured from 316 stainless steel and special engineering polymer selected for their corrosion resistance and resilience to flow erosion. Designed for operation on tap water to EU directive 98/83/EC without additive

SPECIFICATION	
Pressure Range (bar)	0.1 to 200 bar
Feed gallery diameter	6
Porting	1/4" BSP (Parallel)
Maximum Cv Value in flow control direction	0.62
Number of turns Fully open to fully closed	4



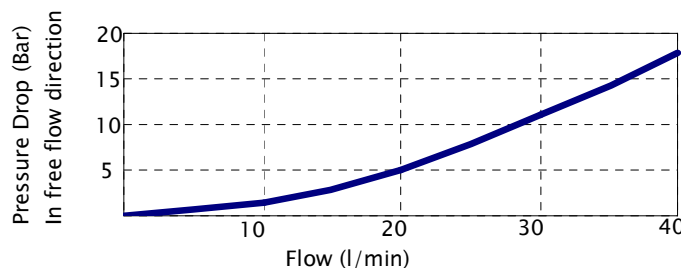
Dimensions



Dimensions in mm

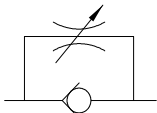
Locking Screw

Flow Characteristics



Rotation of the control wheel opens the flow to a series of helical ports resulting in a very precise control throughout its range. Using materials with a high resistance to flow erosion and a design that ensures the aggressive high pressure jets do not affect the long term setting of the valve.

The valve is supplied with an externally adjusted thumb wheel for operator control without the need for tools. Also fitted with a tamper proof locking screw. When locked the wheel can be rotated but the setting will not be affected.

ORDERING CODES	STANDARD BUILD
 <p>Flow Control Valve</p>	204BXXW

The Water Hydraulics Co. Ltd.

Alexandra House, English Street, Hull, East Yorkshire, HU3 2DJ, United Kingdom.

Tel: +44 (0)1482 595000, Fax: +44 (0)1482 214895, E-Mail: sales@waterhydraulics.co.uk. Registration Number: 4302081 England

Website: www.waterhydraulics.co.uk

Whilst every endeavour has been made to ensure accuracy, this publication cannot be considered to represent part of any contract, whether expressed or implied. The publishers reserve the right to amend specification at their discretion.

